

Inductive Sensors



Housing Style	Part Number	ID Number	Features	Sensing Range (mm)	Output	
18 mm - Embeddable, eurofast® Connection 	Bi 8U-EM18-AN6X-H1141	M1644738	<i>Uprox+</i> , Stainless steel	8	3-Wire DC NPN	
	Bi 8U-EM18WD-AN6X-H1141	M1634839	<i>Uprox+</i> , Washdown	8		
	Bi 8U-M18-AN6X-H1141	M1644737	<i>Uprox+</i>	8		
	Bi 8U-MT18-AN6X-H1141	M1644739	<i>Uprox+</i> , Teflon	8		
		Bi 8U-EM18-AP6X-H1141	M1644734	<i>Uprox+</i> , Stainless steel	8	3-Wire DC PNP
		Bi 8U-EM18WD-AP6X-H1141	M1634816	<i>Uprox+</i> , Washdown	8	
		Bi 8U-M18-AP6X-H1141	M1644731	<i>Uprox+</i>	8	
		Bi 8U-MT18-AP6X-H1141	M1644730	<i>Uprox+</i> , Teflon	8	
		Bi 8U-MT18M-AP6X2-H1141*	M1644740	<i>Uprox+</i> , Dual LED's	8	
		Ni 15U-EM18-AN6X-H1141	M1635336	<i>Uprox+</i> , Stainless steel	15	
Ni 15U-EM18WD-AN6X-H1141	M1634835	<i>Uprox+</i> , Washdown	15			
Ni 15U-M18-AN6X-H1141	M1635335	<i>Uprox+</i>	15			
Ni 15U-MT18-AN6X-H1141	M1635337	<i>Uprox+</i> , Teflon	15			
18 mm - Embeddable, eurofast Connection 	Ni 15U-EM18-AP6X-H1141	M1635332	<i>Uprox+</i> , Stainless steel	15	3-Wire DC PNP	
	Ni 15U-EM18WD-AP6X-H1141	M1634818	<i>Uprox+</i> , Washdown	15		
	Ni 15U-M18-AP6X-H1141	M1635331	<i>Uprox+</i>	15		
	Ni 15U-MT18-AP6X-H1141	M1635333	<i>Uprox+</i> , Teflon	15		
	Ni 15U-MT18M-AP6X2-H1141*	M1635338	<i>Uprox+</i> , Dual LED's	15		
	Bi 8U-EM18E-AP6X-H1141	M1634865	<i>Uprox+</i> , Stainless steel	8	3-Wire DC PNP	
	Bi 8U-M18M-VP44X-H1141	M1634877	<i>Uprox+</i>	8	4-Wire DC PNP	

* MT18M = Barrel length 62 mm.

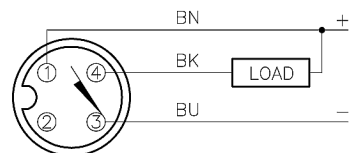


Voltage	Switching Freq. (Hz)	Operating Current (mA)	Operating Temp. (°C)	Protection	Housing	Face	Power LED	Output LED	Mating Cordset	Wiring Diagram #	Wiring Diagrams
10-30 VDC	1500	≤200	-25 to +75	IP 68	SS	LCP	N/A	YE	RK 4T-*	1	<div style="border: 1px solid black; padding: 5px; margin-bottom: 5px;"> Diagram 1 </div> <div style="border: 1px solid black; padding: 5px; margin-bottom: 5px;"> Diagram 2 </div> <div style="border: 1px solid black; padding: 5px;"> Diagram 3 </div>
	1500	≤200	0 to +85	IP 68, 69K	SS	LCP	N/A	YE	RK 4T-*	1	
	1500	≤200	-25 to +75	IP 68	CPB	LCP	N/A	YE	RK 4T-*	1	
	1500	≤200	-25 to +75	IP 68	TC	LCP	N/A	YE	RK 4T-*	1	
10-30 VDC	1500	≤200	-25 to +75	IP 68	SS	LCP	N/A	YE	RK 4T-*	2	
	1500	≤200	0 to +85	IP 68, 69K	SS	LCP	N/A	YE	RK 4T-*	2	
	1500	≤200	-25 to +75	IP 68	CPB	LCP	N/A	YE	RK 4T-*	2	
	1500	≤200	-25 to +75	IP 68	TC	LCP	N/A	YE	RK 4T-*	2	
	1500	≤200	-25 to +75	IP 68	TC	LCP	GN	YE	RK 4T-*	2	
10-30 VDC	1000	≤200	-25 to +75	IP 68	SS	LCP	N/A	YE	RK 4T-*	1	
	1000	≤200	0 to +85	IP 68, 69K	SS	LCP	N/A	YE	RK 4T-*	1	
	1000	≤200	-25 to +75	IP 68	CPB	LCP	N/A	YE	RK 4T-*	1	
	1000	≤200	-25 to +75	IP 68	TC	LCP	N/A	YE	RK 4T-*	1	
10-30 VDC	1000	≤200	-25 to +75	IP 68	SS	LCP	N/A	YE	RK 4T-*	2	
	1000	≤200	0 to +85	IP 68, 69K	SS	LCP	N/A	YE	RK 4T-*	2	
	1000	≤200	-25 to +75	IP 68	CPB	LCP	N/A	YE	RK 4T-*	2	
	1000	≤200	-25 to +75	IP 68	TC	LCP	N/A	YE	RK 4T-*	2	
	1000	≤200	-25 to +75	IP 68	TC	LCP	GN	YE	RK 4T-*	2	
10-30 VDC	1000	≤200	-25 to +75	IP 68	SS	LCP	N/A	YE	RK 4T-*	2	
10-55 VDC	1500	≤200	-30 to +85	IP 68	CPB	LCP	N/A	YE	RK 4,4T-*	3	

Uprox+

* Length in meters.

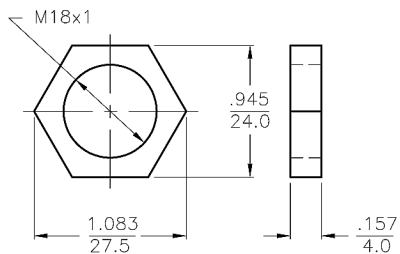
WIRING DIAGRAM



OUTPUT: AN6X

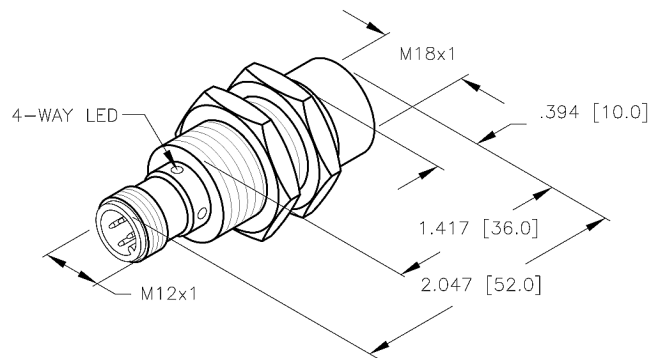
SHORT-CIRCUIT AND OVERLOAD PROTECTED

LOCKNUT LN-M18



SPECIFICATIONS

OPERATING VOLTAGE	10-30 VDC
RIPPLE	≤ 10%
DIFFERENTIAL TRAVEL (HYSTERESIS)	3-15% (5% TYPICAL)
VOLTAGE DROP ACROSS CONDUCTING SENSOR	≤ 1.8 V at 200 mA
OUTPUT FUNCTION	NORMALLY OPEN 3-WIRE DC SELF-CONTAINED
SHORT-CIRCUIT PROTECTED	YES
TRIGGER CURRENT FOR OVERLOAD PROTECTION	≥ 220 mA
CONTINUOUS LOAD CURRENT	≤ 200 mA
OFF-STATE (LEAKAGE) CURRENT	≤ 0.1 mA
NO-LOAD CURRENT	≤ 15 ms
TIME DELAY BEFORE AVAILABILITY	≤ 8 ms
POWER-ON EFFECT	PER IEC 947-5-2
REVERSE POLARITY PROTECTION	YES
WIRE-BREAK PROTECTION	YES
TRANSIENT PROTECTION	Per EN 60947-5-2
OPERATING TEMPERATURE (10% DRIFT)	-25°C to +70°C (-13°F to +158°F)
OPERATING TEMPERATURE (15% DRIFT)	-30°C to +85°C (-22°F to +185°F)
ENCLOSURE	MEETS NEMA 1, 3, 4, 6, 13 AND IEC IP68
SHOCK	30 g, 11 ms
VIBRATION	55 Hz, 1 mm AMPLITUDE (IN ALL 3 PLANES)
LED FUNCTION	YELLOW: OUTPUT ENERGIZED
SENSING RANGE	15 mm = .591" (NOMINAL)
SWITCHING FREQUENCY	2000 Hz
REPEATABILITY	≤ 2% of RATED OPERATING DISTANCE
EMBEDDABLE (SHIELDED)	NO
MATING PLUGS/CABLES	4-PIN "EUROFAST" CONSTRUCTION



SOURCE DRAWING - FOR REFERENCE ONLY

NOTES:

1. UPROX HAS WELD FIELD IMMUNITY, SENSOR IS SUITABLE FOR USE ON RESISTANCE MACHINES.

RELATED DOCUMENTS		3RD ANGLE PROJECTION		THIS DRAWING IS PROPERTY OF TURCK INC. USE OF THIS DOCUMENT WITHOUT WRITTEN PERMISSION IS PROHIBITED.		 High Technology Sensors and Automation Controls	
1.			DRFT	RDS	DATE 07/21/05	DESCRIPTION NI15U-M18-AN6X-H1141	
2.			DSGN	EH	SCALE NONE		
3.		TOLERANCES UNLESS OTHERWISE SPECIFIED 0.0394in [1.00mm]	UNIT OF MEASUREMENT			IDENTIFICATION NO. M1635335	
4.			INCH [MILLIMETER]				
MATERIAL BRASS BARREL		FINISH COPPER, NICKEL, CHROME PLATING		DO NOT SCALE THIS DRAWING		REV A	
A		DRAWING RELEASE		RDS 07/21/05		FILE: M1635335	
REV		DESCRIPTION		BY		DATE	
		ECO NO.				SHEET 1 OF 1	